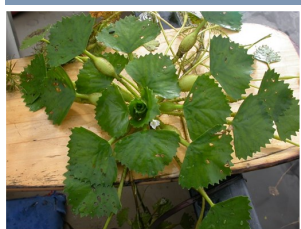


# ASSESSMENT RECORD



Create an assessment in iMapInvasives to document the severity of an infestation, such as the population of kudzu seen here.

Photo credit: user: streaminspector/Flickr



Assessment record seen on map in iMapInvasives, indicating a severe infestation of water chestnut (*Trapa natans*) in Bucks County.

*An assessment provides detailed information about an observation. This can include the intensity of an infestation, the damage caused by the invading organism, and details about the surrounding area.*

## Tell me more about what an assessment record is.

An assessment is tied one-to-one to an observation record. A new observation and assessment are created each time an infestation is re-evaluated (i.e., pre- or post-treatment assessment). There are five assessment types:  
1) Terrestrial plant, 2) Terrestrial animal, 3) Aquatic plant, 4) Aquatic animal, and 5) Insect. While many data fields are common to all assessment types, some fields will depend on the species selected in the observation.

## How do I enter an assessment?

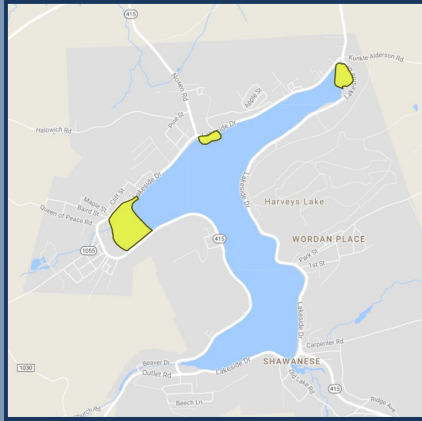
To enter assessment data, you must first register for a free login account from a participating state or province in the iMapInvasives network. Visit [www.iMapInvasives.org](http://www.iMapInvasives.org) and click on “Login Now” for more details. Only users that are a ‘Level 3’ and higher are permitted to enter assessment data. To increase your user level, contact the Pennsylvania iMapInvasives administrator at [imapinvasives@paconserve.org](mailto:imapinvasives@paconserve.org). Prior to creating an assessment record, you must create an observation record to “tie” the assessment record to. Learn how to enter an observation record by watching our online training video available on YouTube at <https://www.youtube.com/watch?v=aAlez27twJE&t=2s>.

## How is assessment data represented on the map?

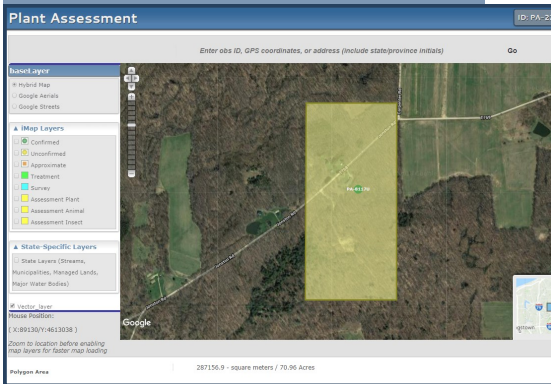
Assessment records are displayed on the map using yellow polygons. An assessment polygon outlines the shape of a site where an observation was made and for which an invasive species population is present (i.e., an infested area).

## What basic information is captured in an assessment record?

1) Observed species; 2) Size of infested area [shown in both square meters and acres]; 3) Site disturbance type and severity; 4) Landscape type; and 5) Native vegetation distribution. Depending on the observed species (i.e., whether it was a plant or animal, terrestrial or aquatic), additional information can be captured including percent cover and/or cover class, waterbody type, boating regulations, number of animals found, etc.



Three assessment records in Harvey's Lake (Luzerne County) indicate the presence of hydrilla (*Hydrilla verticillata*), an aggressive aquatic invasive species.



Draw a polygon in iMapInvasives to represent the assessed area relative to a specific invasive species finding.



Sharing information for strategic management

The Pennsylvania iMapInvasives Program is a partnership of the Western Pennsylvania Conservancy and the Pennsylvania Natural Heritage Program.



## Online Data Entry

To enter assessment data using the online interface (i.e., a desktop computer or laptop), follow the instructions outlined below:

- Enter and submit observation information (who, what, when, where). See separate instructions for more details.
- Select 'Submit Assessment' via the Observation Information page or directly after submitting an observation record.
- In the map portion of the Assessment Data Entry screen, draw a polygon around the area covered by the infestation.
- Fill in data fields applicable to your assessment.

1. Observation's information page

2. After submitting an Observation

- Select 'Update Assessment' at the bottom of the page to submit and save your record. You can edit your observation and assessment records up until the related observation record is confirmed by the iMapInvasives administrator. If you need to edit your record(s) after the record has been confirmed, contact the administrator at [imapinvasives@paconserv.org](mailto:imapinvasives@paconserv.org).

## iMapInvasives Mobile App

The iMapInvasives mobile app is not able to create new assessment records (only observation records at present). However, the app does allow users to enter some assessment-related information while creating a new observation record. As seen on the right, users have the option to enter the size of an area containing an invasive species as well as its distribution. This offers a great way to enter some assessment information while in the field. Then, once at a laptop or desktop computer, you can choose to use this information to create a full assessment record using the steps outlined in our Assessment Reference Guide available at [www.paimapinvasives.org](http://www.paimapinvasives.org) > Contribute Data.

## Helpful Links

Pennsylvania iMapInvasives Homepage:  
[www.paimapinvasives.org](http://www.paimapinvasives.org)